

# FIOS

# FEATURES OVERVIEW



## ONLINE TRACKING

- Unit work list to overview all monitored vehicles, machinery, and employees;
- Sorting, filtering, and search tools to find the needed vehicles faster;
- Map to track the unlimited number of vehicles, trailers, and passengers in real-time;
- Mini-windows to track single units on the map, via live video, alerts, or Google Street View.

## NOTIFICATIONS

- Instant alerts via email, SMS, web and mobile pop-ups;
- 20+ notification triggering parameters, including SOS/panic button alerts;
- Customizable notification text;
- Map centering on the alert location;
- Browser notifications for FiOS web version.

## ADDITIONAL VEHICLE INFORMATION

- Location as an address, geofence, or coordinates;
- Indicators for motion & connection state, battery power & data actuality to ensure that the vehicle is online;
- Driver and trailer details, including photos;
- Sensor values and multicolor widgets to detect abnormalities at a glance;
- Presence in a geofence or distance to it.



## REPORT TABLES

- Flexible report templates, where you can combine 300+ monitoring parameters at your option;
- On-schedule/-alert report generation & emailing;
- Quick printing and export to file options;
- Attachable map with tracks, geofences, & event markers, making reports more visually appealing;
- Advanced reports on groups of vehicles, users, drivers, trailers, and passengers.
- Data grouping by months, vehicles, geofences, and other parameters;
- Binding of vehicles to report templates for one-click report generation.

## DASHBOARD

- Fleet performance summary updated in real-time.
- 7 information blocks, including fuel consumption, speedings, mileage, and latest notifications.
- 2 rating charts: top units by mileage & fuel spent.

## CHARTS IN REPORTS

- Fleet analytics presented as charts & graphs;
- Event markers and colored chart backgrounds indicating the events' intervals and their impact on the selected parameter.
- Autoscaling and -zoom for user-friendly data presentation;
- Special "Speed vs. Fuel consumption" and "Processed fuel level" charts.



## GEOFENCES: AREAS OF INTEREST

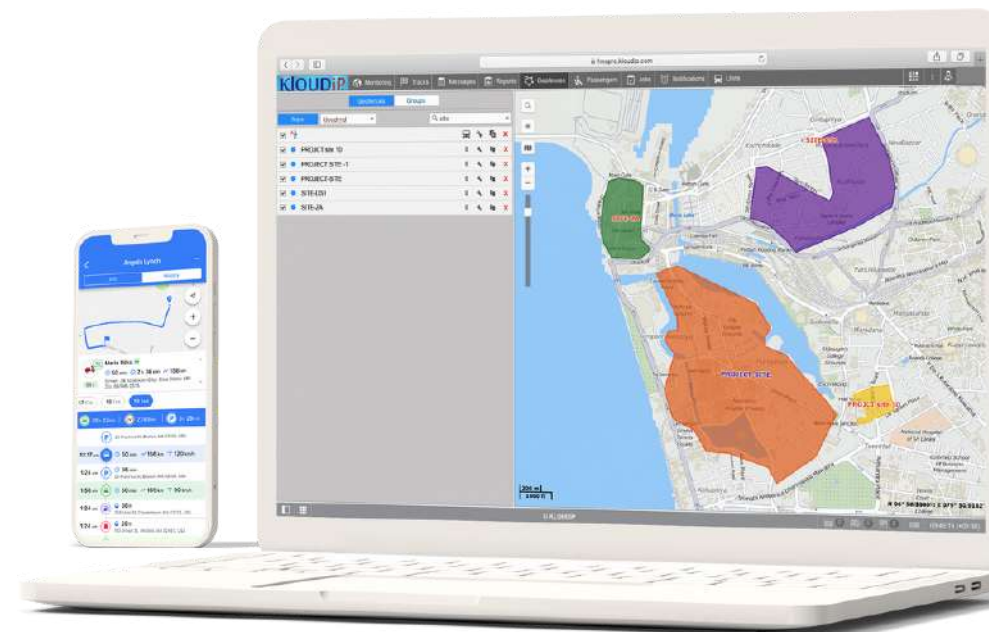
- Line geofences to mark roads and unveil deviations from the route.
- Polygon geofences to precisely mark areas of any shape, from production sites to city borders.
- Circle geofences to tag points of interest, route points, and detect visits;
- Notifications on vehicles entering or leaving the selected area;
- Geofence tooltip providing quick access to its description, photo, and data from third-party sources, e.g., weather forecast or web camera.

## LOCATOR

- The tool is designed to share real-time vehicle movements and sensor values with third parties.

## VEHICLE TRACKS: COLORED LINES ON THE MAP

- Multicolor track sections indicating speed, sensor values, or individual trips;
- Markers on the map to detect where speedings, fuel fillings, thefts, or other events occurred;
- Track player designed to visualize vehicle movements along the route;
- Advanced vehicle information, including speed, address, and sensor values, at every track point.



## GENERAL PROPERTIES

- Unit name and type – vehicle, machinery, cargo – for faster search and filtration;
- Simple tracker configuration for quick connection;
- Mileage, engine hours, and GPRS traffic counters.
- Unit icons to visualize its type in the work list;
- Smart trip detection options.

## ACCESS RIGHTS

- Multi-level access to vehicles for various job roles.

## PROFILE & CUSTOM FIELDS

- Unit profile: VIN, registration plate, vehicle brand, model, year, color, and engine parameters.
- Custom fields: any other parameters you want to see in the unit tooltip and advanced information section, like fuel grade, owner, etc.

## ADVANCED PROPERTIES

- Fuel consumption rate and seasonal coefficients for precise fuel monitoring without sensors;
- Urban speed limit to control speeding in cities;
- Speeding detection options, including user-specified limits or road limits from maps.
- Unit name and track color selection.
- Location detection by Wi-Fi points and cellular base stations.



## SENSOR TYPES

- Mileage sensor & relative odometer.
- Digital: engine ignition, alarm, private mode, real-time motion, & custom digital sensors.
- Gauge: voltage & weight sensors, accelerometer, plus temperature sensors and coefficients.
- Engine revolution and efficiency, absolute and relative engine hour sensors.
- Fuel: impulse, absolute, and instant fuel consumption sensors, plus, fuel level sensors;
- Other: counter and custom sensors, driver, trailer, and passenger assignment sensors.
- Virtual sensors based on any parameter.

## MATH CONSUMPTION WIZARD

- Fuel consumption calculation based on rates and coefficients for various circumstances, e.g., driving at high speed or carrying excess weight.
- No physical sensors are needed, but math.

## SENSORS & COUNTERS

- Simple sensor and counter configuration
- Custom colors & captions for different sensor value intervals to visually identify abnormalities;
- Sensor value validation for error-free monitoring;
- Calculation table designed to convert raw data into human-understandable sensor values.



## ECO DRIVING

- 5 basic driving safety criteria: speeding, braking, acceleration, sharp turn, & reckless driving;
- Custom criteria to evaluate driving style based on any parameter you consider a violation;
- Driver behavior monitoring presets for cars, trucks, and buses for quick configuration;
- Driving style data validation for error-free control;
- Adjustable penalties based on the violation type and severity.

## VIDEO MONITORING

- In-app video player with search, saving, rewind, fragment replay, and zoom options.
- Real-time and event-based video monitoring;
- Automatic and manual video saving;
- Video footage in reports;
- 24-hour video history.

## SERVICE INTERVALS

- Vehicle maintenance management module;
- List of services with detailed descriptions and statuses;
- Color coding for due and overdue services to visually identify maintenance faults;
- Customizable service intervals by days, mileage, or engine hours.



## COMMANDS: REMOTE VEHICLE MANAGEMENT

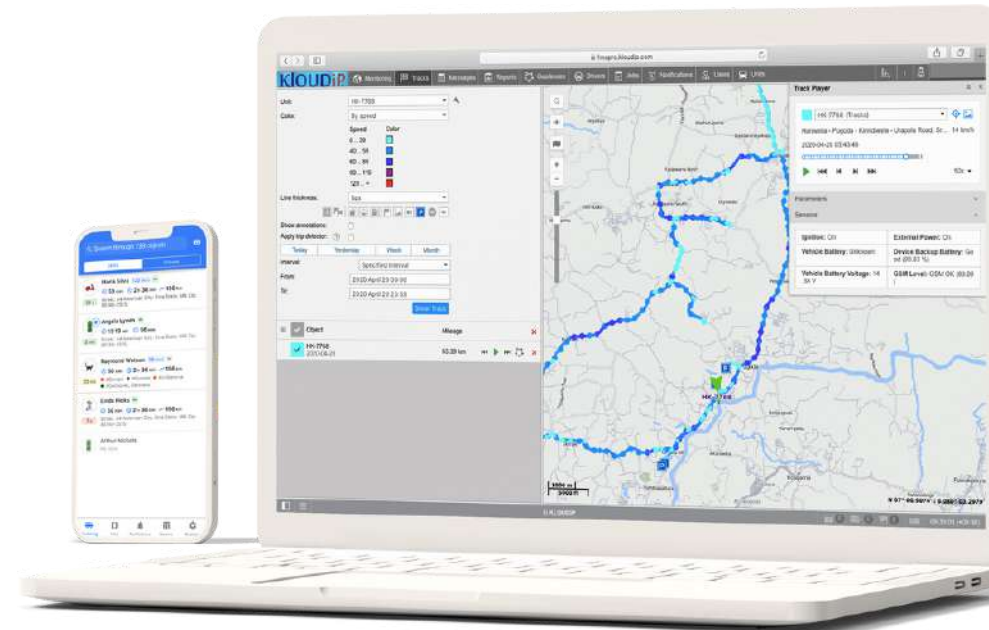
- 17 preset commands – e.g., engine block, dash camera snapshot request, and GPS tracker firmware update – to one or multiple vehicles;
- Chatting with drivers via commands;
- Command-based route sending to the driver's satellite navigation device.

## QUICK ACTIONS FROM THE MONITORING PANEL

- “Quick track” to overview movement history;
- “Quick report” to analyze the vehicle performance;
- View the latest video or image from MDVRs to see recent events with your own eyes;
- “Send command” to manage the vehicle remotely, e.g., disable the engine;
- Register a custom event for the vehicle;
- “Send SMS” to the driver or GPS tracker.

## JOBS: FLEET MANAGEMENT AUTOMATION

- Scheduled actions for process automation.
- 7 job types, including sending commands to vehicles, emailing reports, and managing counters.
- Job assignment to particular vehicles and vehicle groups for quick activation.
- Test jobs for error-free execution.



## DRIVERS, TRAILERS, PASSENGERS

- Manual or automatic binding to vehicles;
- RFID/NFC identification;
- Real-time tracking on the map.

## TRAILERS

- Trailer tooltip and additional information, including its name, image, and description.
- Custom fields to specify dimensions, color, loading options, and other trailer characteristics.

## PASSENGERS

- Passenger count analytics in reports;
- Passenger pick-up and drop-off notifications;
- Assignment history to analyze passenger trips;
- Passenger tooltip & advanced information with a name, photo, vehicle, pick-up time, & address.

## DRIVERS

- Assignment/unassignment alerts for driver activity tracking and work shift registration;
- Simultaneous assignments to control team drivers;
- Work-rest regulations compliance control;
- Driver tooltip & advanced info, including a name, photo, category, experience, or any custom fields.
- Driver's phone for quick calls and SMS from FiOS.



## WEB APPS



HEED fleet maintenance application is designed to manage service operations and track spare parts, fuel & costs.



CIRCUMSPECTOR driver behavior monitoring app allows fleet managers to detect traffic violations and rank drivers based on their skills.



SHUTTLE transport management platform is designed to plan, track, and analyze fixed-route transportation management.



DISTRIBUTION delivery and courier monitoring software digitalizes order management, route planning, delivery tracking, and analytics.



GAUGE fuel card management system detects fraud and theft by cross-checking fuel-filling data from FiOS vs. your fuel card system.

## TOOLS

Use...

- "Track Player" to replay vehicle movements;
- "Distance" for mileage measurement;
- "Area" for perimeter or area measurement;
- "Address" to search for locations;
- "Routing" for advanced route management;
- "Hittest" for track point & message tracing;
- "Nearest units" to find vehicles that are closest to selected locations;
- "LBS detector" to locate vehicles using mobile networks;
- "SMS" to send messages to drivers & trackers;
- "Search on the map" to find any system element by its name.

## FIOS MOBILE APPLICATION

A powerful fleet management app designed to track transport online, study fleet analytics, monitor fuel consumption, & manage vehicles via commands.

## SHUTTLE MOBILE APPLICATION

The app for fixed-route transport passengers. It shows real-time transport movements, ETAs, and schedules and allows people to rate their trips.

## DISTRIBUTION MOBILE APPLICATION

The mobile app for couriers provides access to orders & routes, enables digital POD & communication with the office, and facilitates staff tracking.

## PROBE MOBILE APPLICATION

PROBE app turns a smartphone into a tracker, allowing to track and manage staff through their mobile devices.

